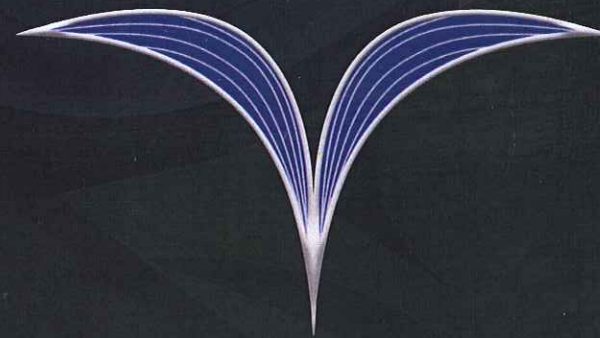


# KLIA3

PROPOSED REGIONAL LOW COST CARRIER TERMINAL IN KLIA SEPANG

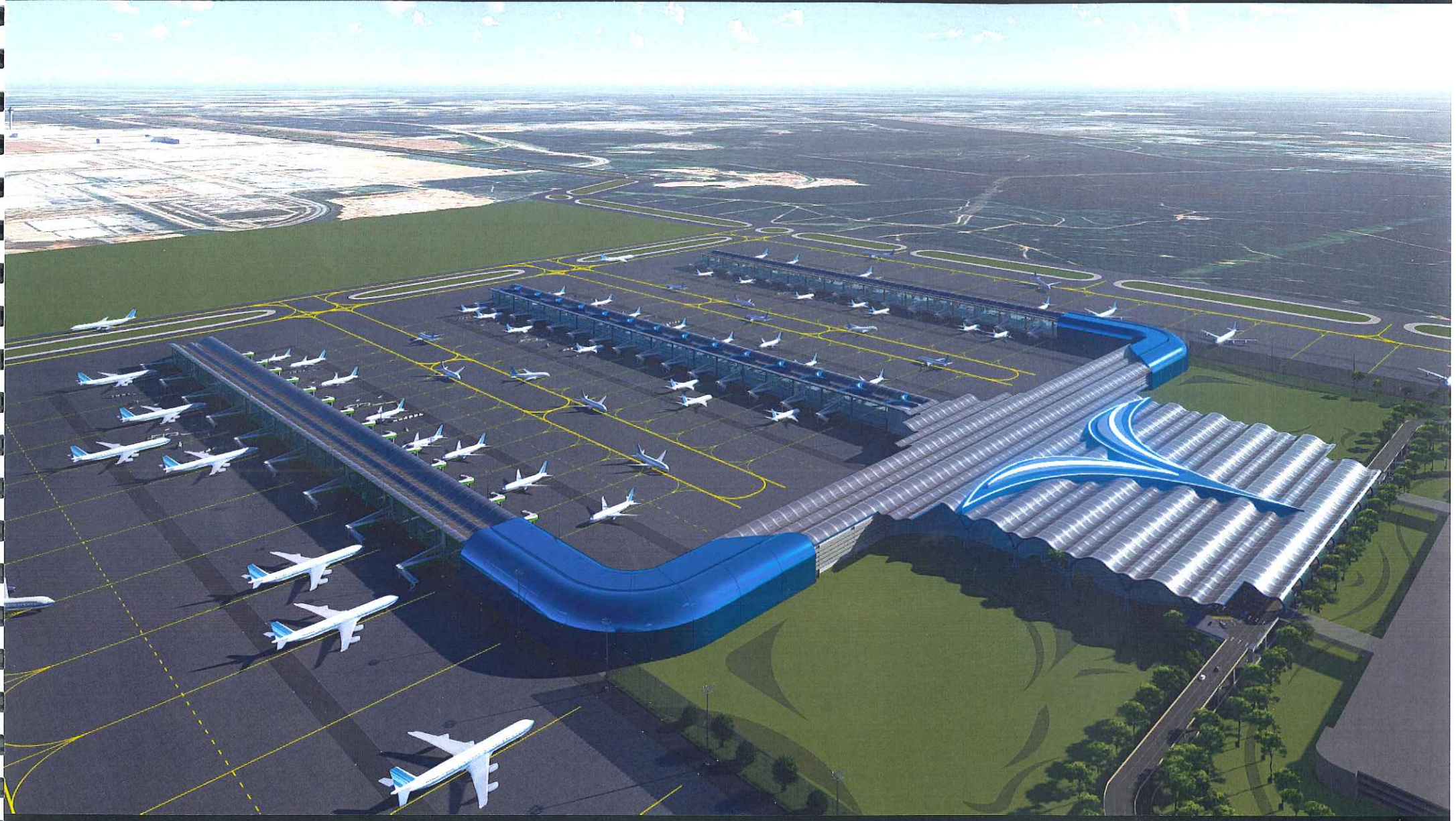
The Making of KLIA3 : Concept

Date : 10.10.19



Gerbang Prima Angkasa





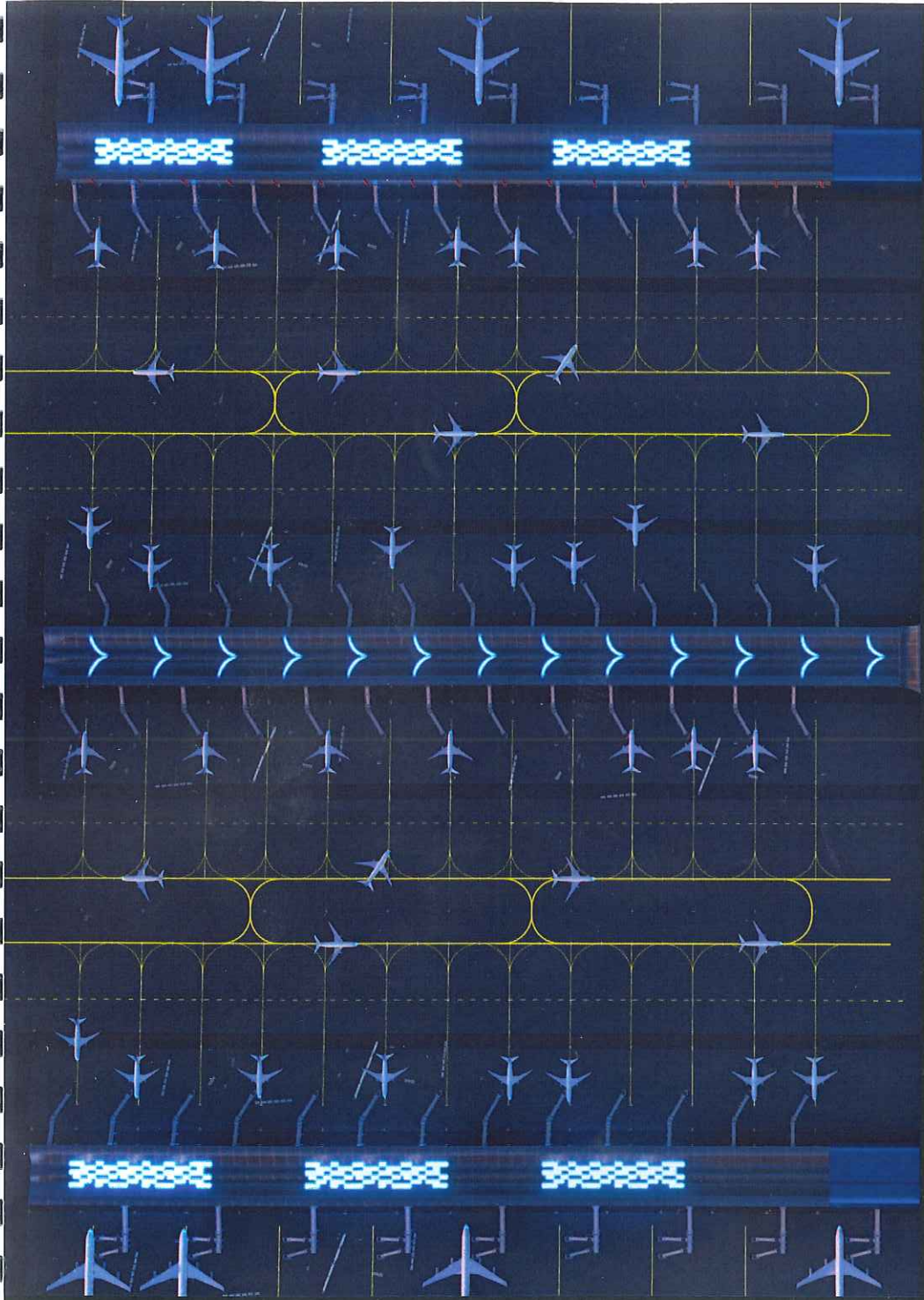




## KEY FACTS & FIGURE

Capacity	: 45 mppa (Phase 1)
Gross Floor Area	: 360,000 sqm
Total Area Required	: 500 acres (Terminal Area) : 500 acres (Parallel Taxiway) (Total 1000 acres)
Nos. of Aircraft Stand	: 80 Contact Stand 20 Remote Stand (Total 100 Stand)
Level of Service (LOS):	C (20 sqm per pax)
Construction Commencement	: First Quarter 2020
Operation Commencement	: First Quarter 2023





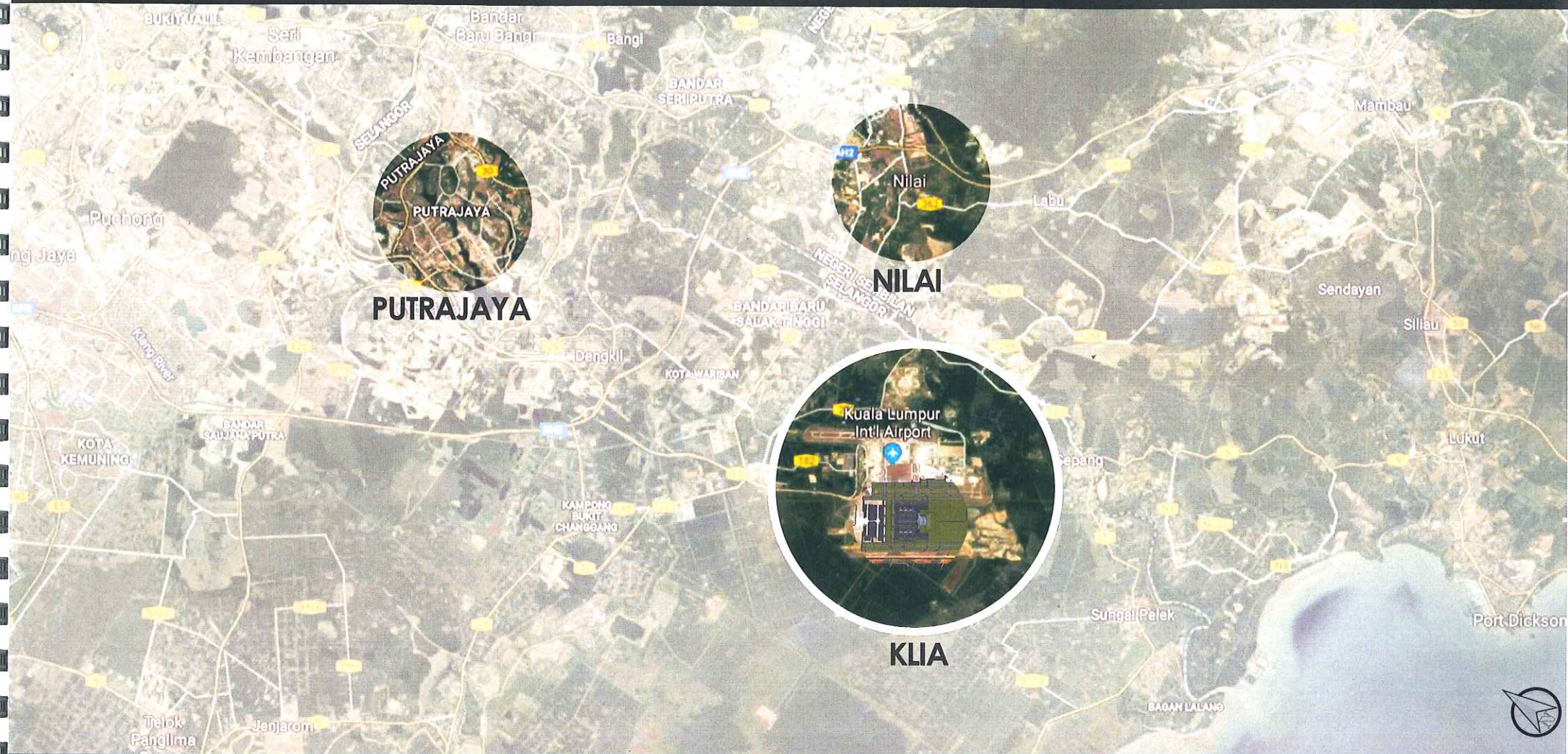
CONTENT :

1 - LOCATION



2 - TERMINAL CONCEPT





### KEY PLAN

The Proposed Regional Low Cost Carrier Hub is located within KLIA Sepang Aeropolis 10 x 10 km Boundary.  
The Terminal will cater for Low Cost Carrier and will be purpose designed for Low Cost operations.





### LOCATION PLAN

The proposed location for the new KLIA3 is in between Runway 2 and Runway 3. The total area required for terminal development is 500 acres and additional 500 acres for Airside Infrastructure.



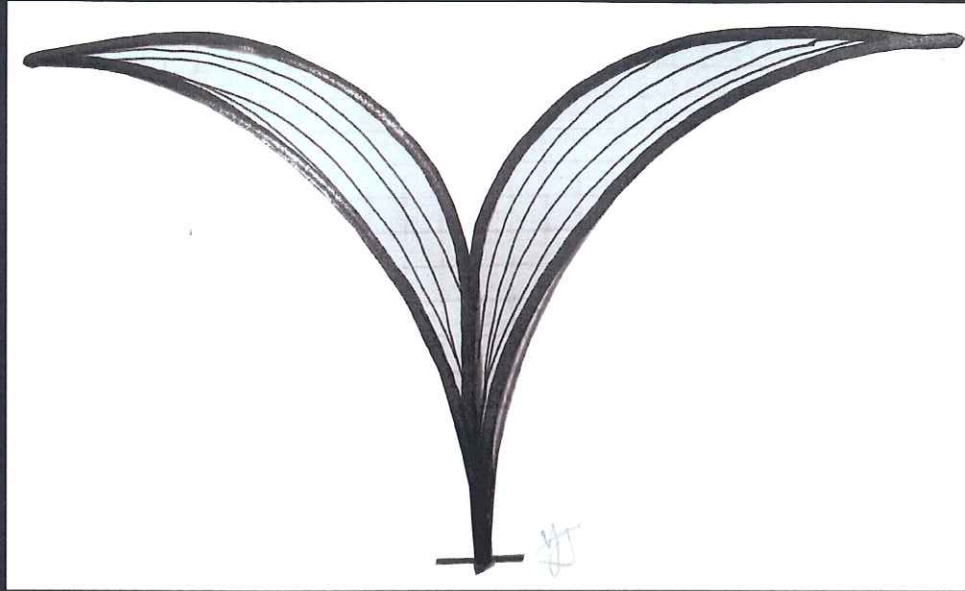


### PHASING

The Opening Phase (Phase 1) will be designed to cater for passenger up to 45 million passenger per annum (mppa). Once KLIA3 reaches capacity, the next expansion (Phase 2) will be developed using the same Modular Pier Concept. The total combined capacity for Phase 1 and Phase 2 will be able to cater for 60mppa.

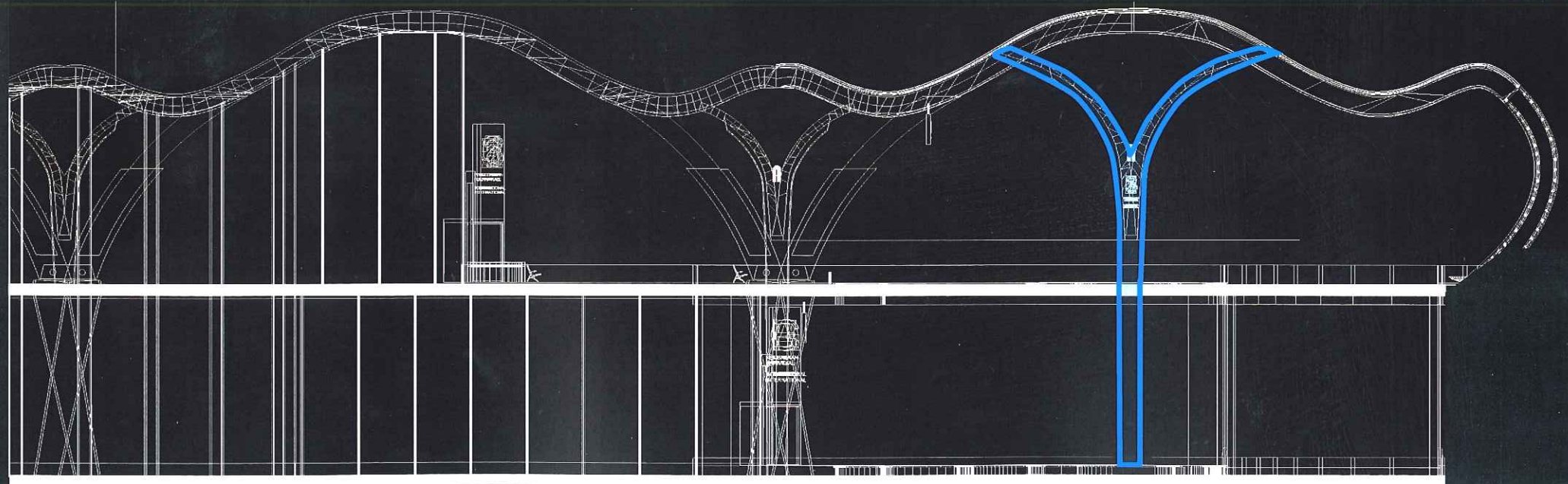


## CONCEPT 1: BIRDS IN FLIGHT LOGO



The 'Birds In Flight' logo represent the Fluidity of the Terminal, as well as the overall architectural language that is translated into the Architecture and Interior Spaces.

The design of the column makes for much more efficient loading capacity by splitting it into 2 loading point, and we can achieve a wide free span of 36m grid, which translated into a user friendly airport.

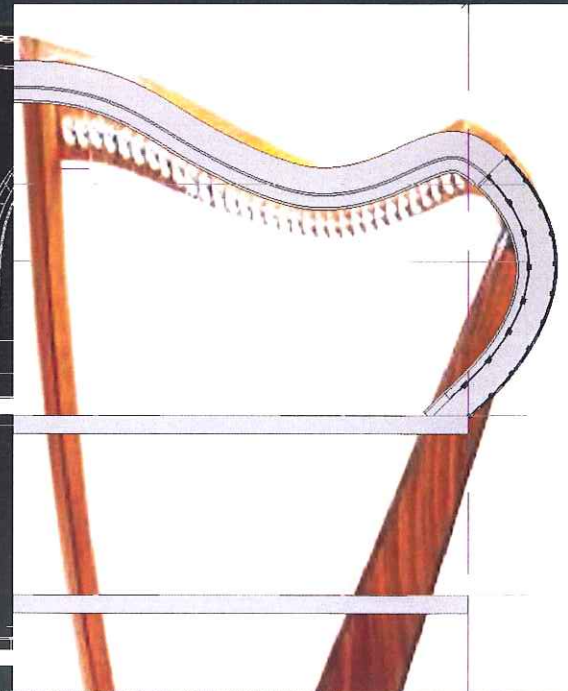
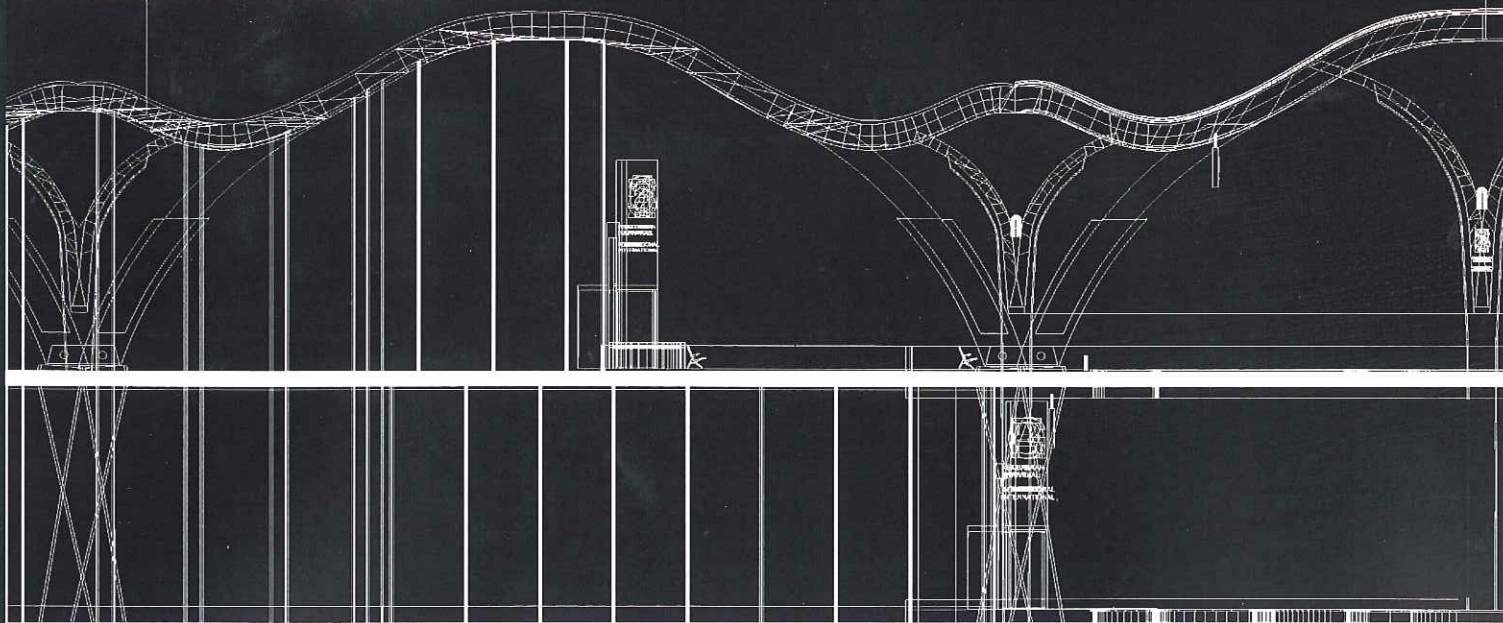




## CONCEPT 2: HARP SHAPE ROOF



The roof line and section of the drop off area was inspired by the shape of the harp. This accommodates the differing width requirements for arrival and departure, as well as creating an enclosed area for the terminal frontage.







### BIRDS IN FLIGHT CONCEPT

The overall architectural language of the terminal takes inspiration from the Gerbang Prima Angkasa '*Birds In Flight*' logo that represent the Fluidity of the Terminal. This is translated into the modular roof, column as well as the interior spaces.



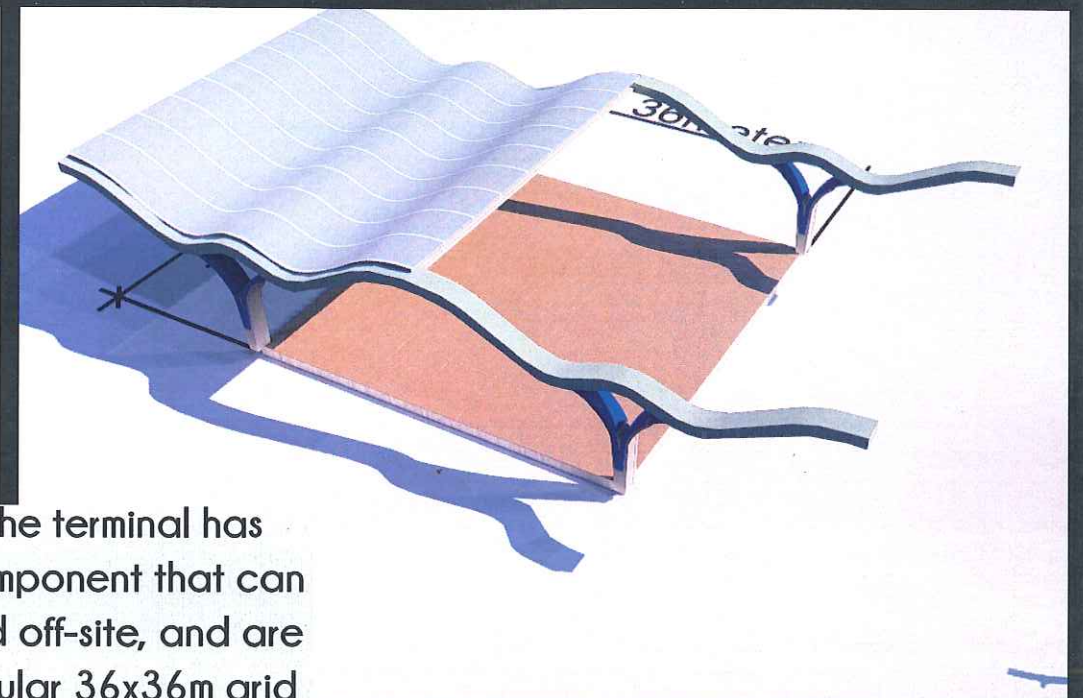
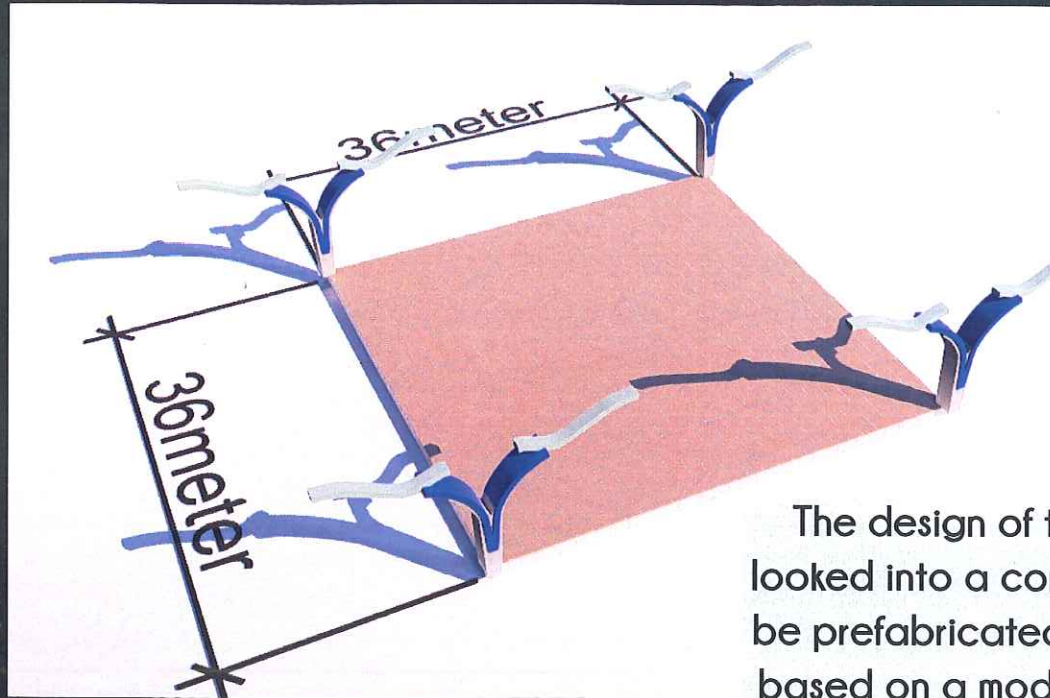


### DEPARTURE KERBSIDE

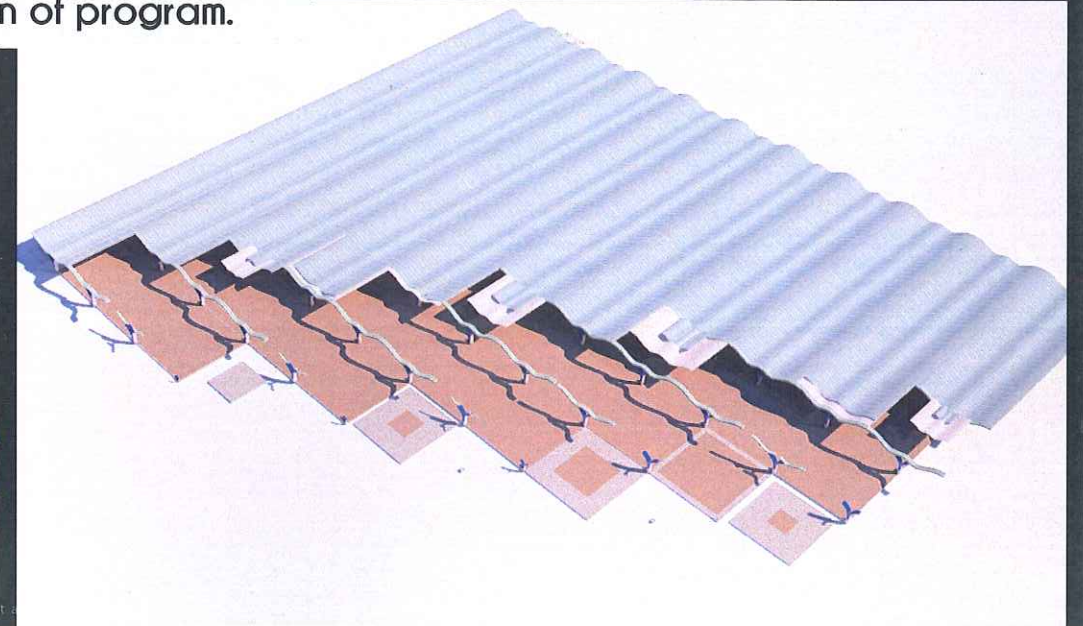
The terminal kerbside is a key element of the passenger experience – it provides the first impressions a passenger has at the airport. The covered kerbside provides comfortable environment with seating, landscaping as well as clear signage for dropping off passenger.



## CONCEPT 3 : MODULAR PRE-FABRICATED COMPONENTS



The design of the terminal has looked into a component that can be prefabricated off-site, and are based on a modular 36x36m grid and repetition of program.





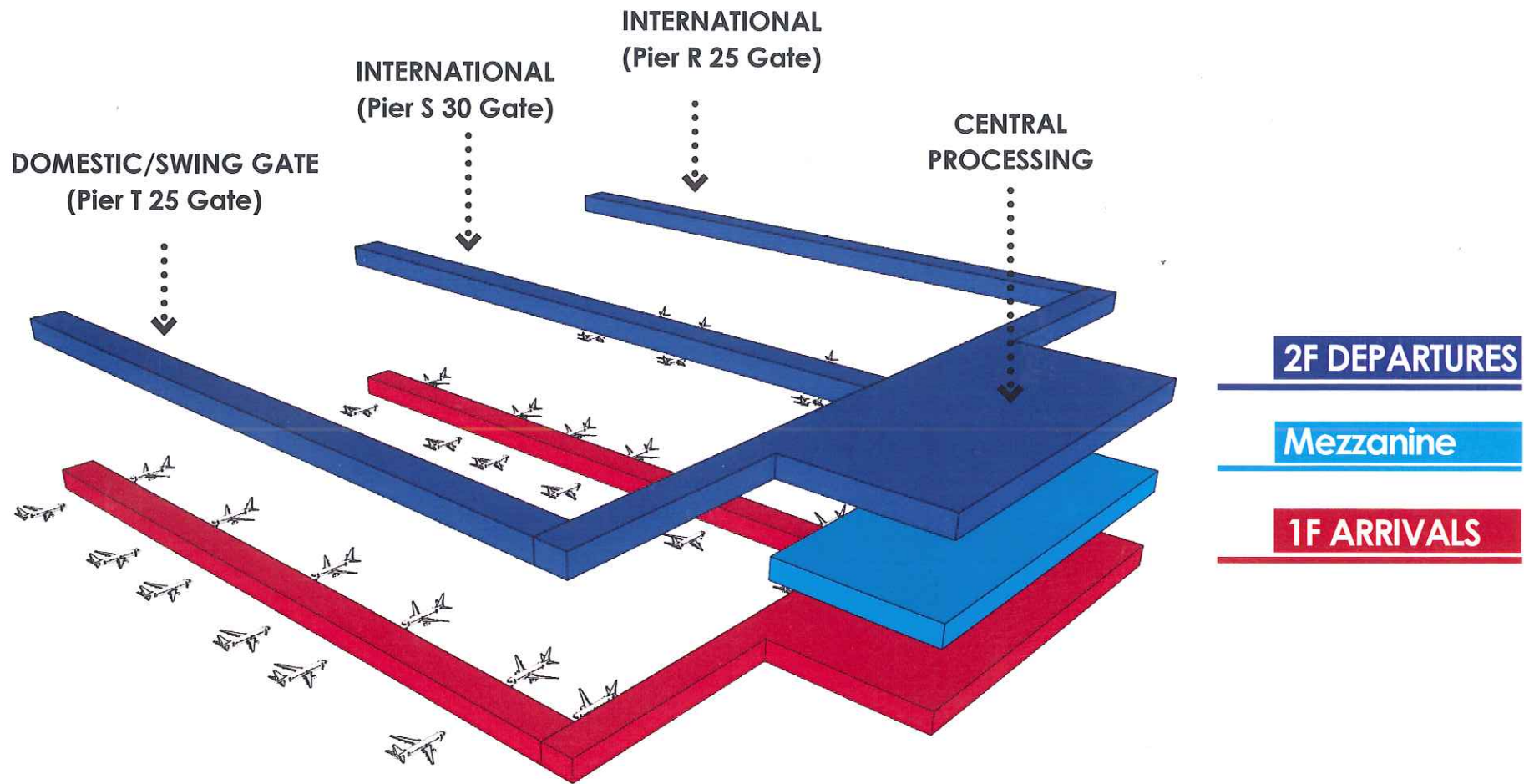


### MODULAR PRE-FABRICATEED COMPONENTS

The design of the terminal are based on modular components and repetition of programs. This is to achieve the fast track construction period of 24 month.



# CONCEPT 4: PIER CONFIGURATION



## M PIER CONFIGURATION

The terminal configuration is designed based on a two level pier concept for Efficient, Functional Operation and Seamless Passenger Experience. The process flow are based on minimal level change for departing and arriving passenger.



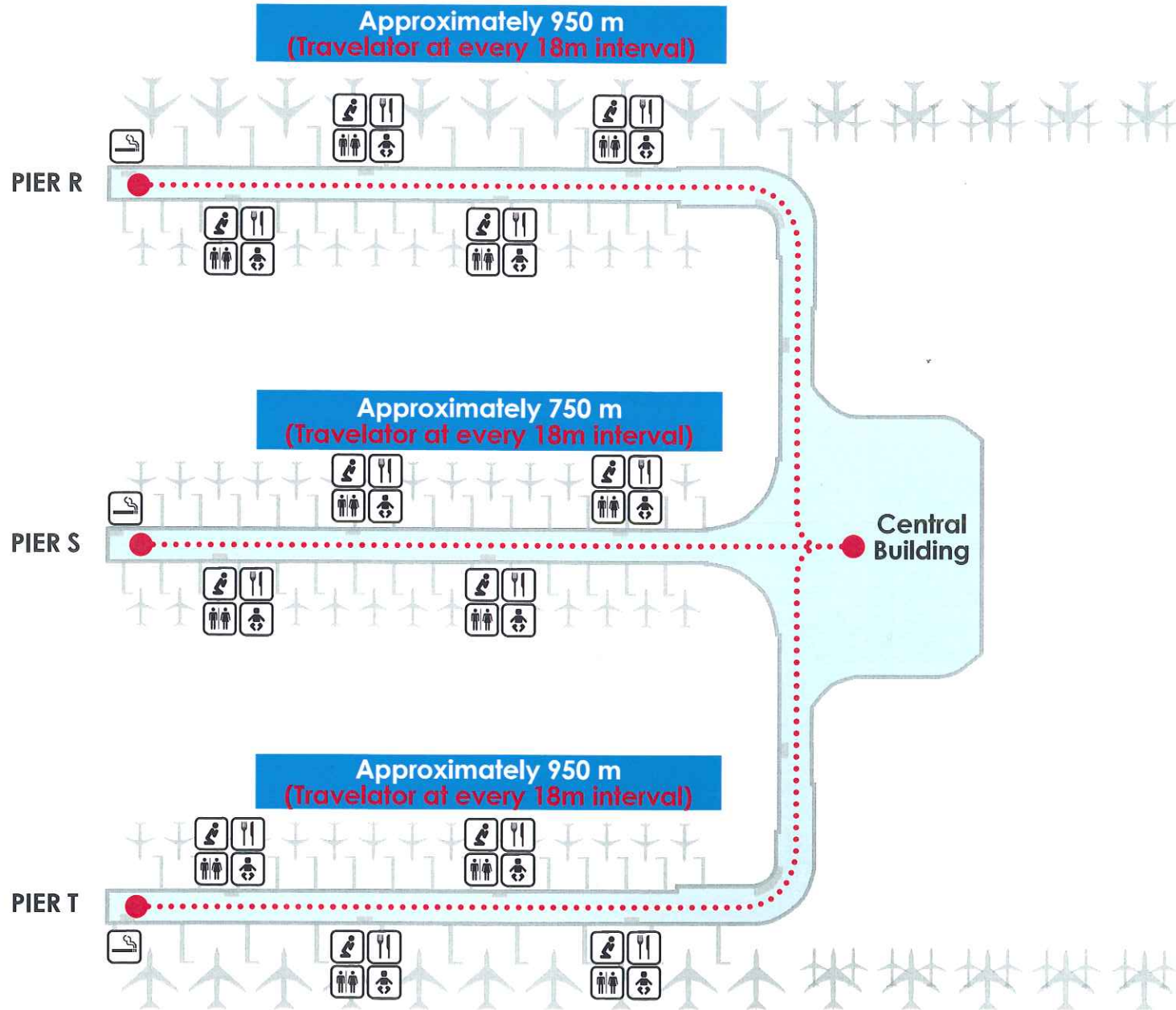


### EFFICIENT 2 LEVEL TERMINAL FOR SEAMLESS TRAVEL EXPERIENCE

The Cross Section shows two levels of roadways separate arriving passengers from departing passengers, a configuration that simplifies the loading and unloading process for passengers.



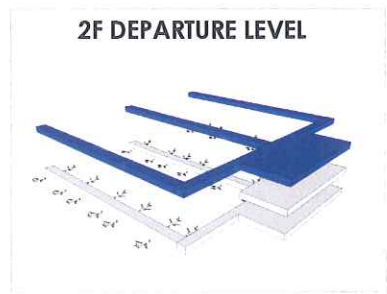
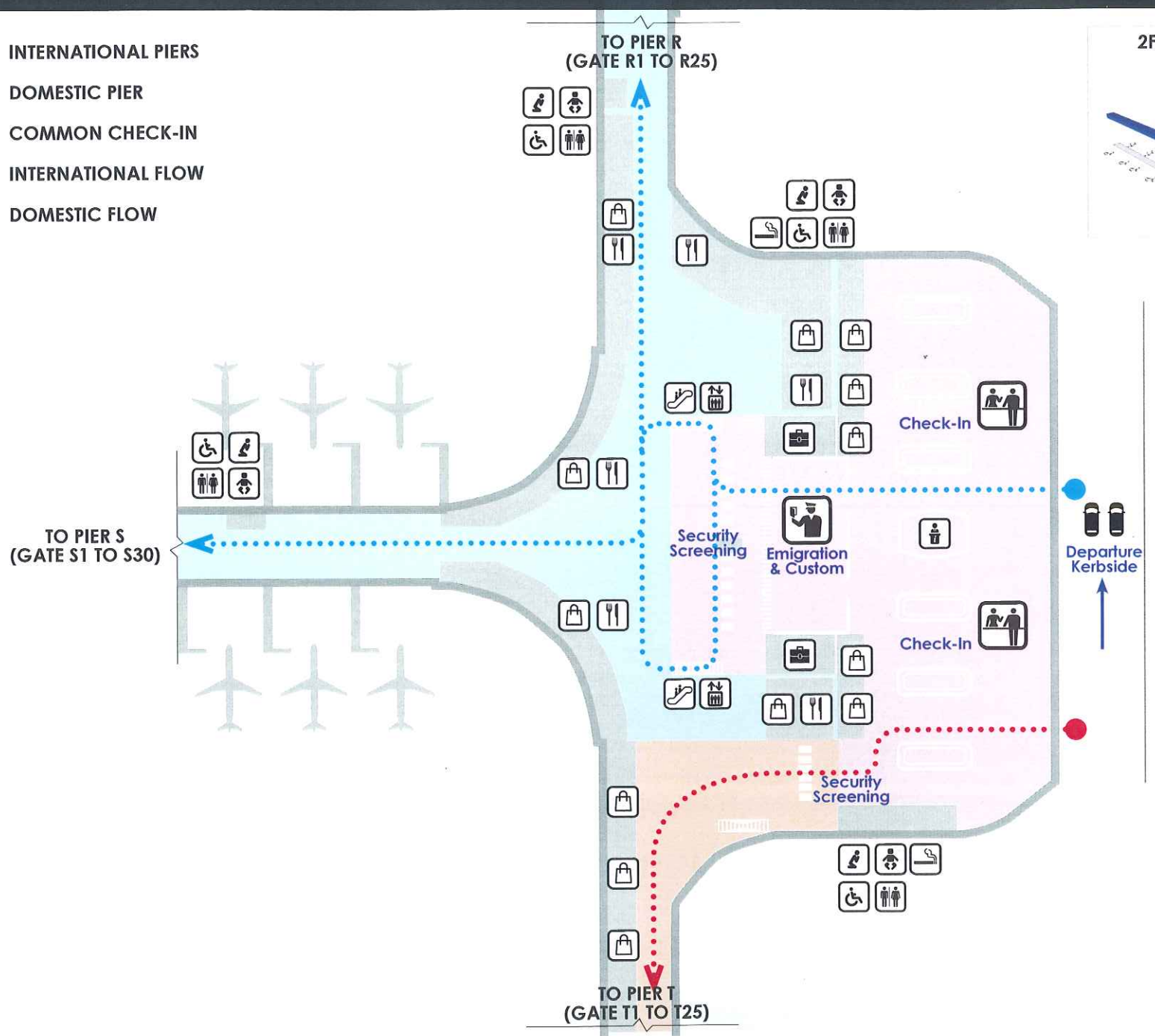
# M CONFIGURATION FOR OPTIMUM TRAVEL DISTANCE





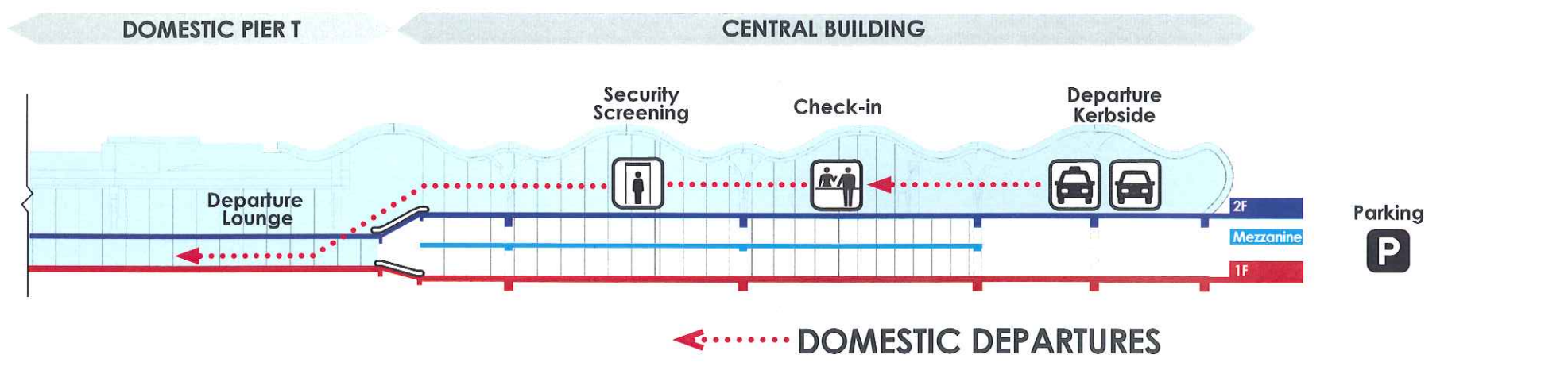
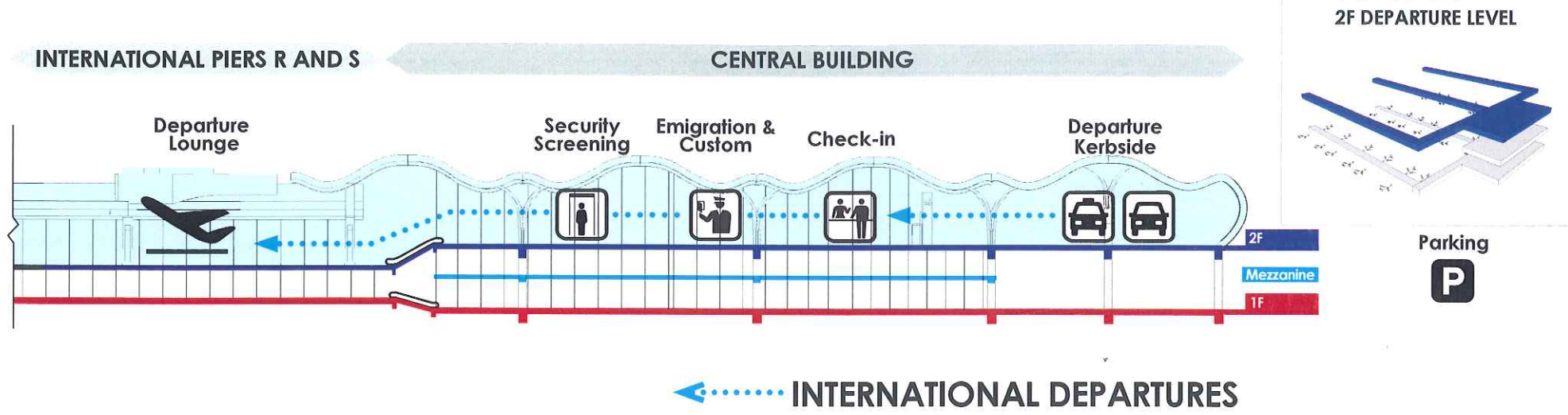
# LEVEL 2, DEPARTURE FLOW DIAGRAM

- INTERNATIONAL PIERS
- DOMESTIC PIER
- COMMON CHECK-IN
- INTERNATIONAL FLOW
- DOMESTIC FLOW





# LEVEL 2, DEPARTURE FLOW DIAGRAM







### SIMPLE WAY-FINDING

The columns functions as a Structural Support as well as Signage / Way-finding to ensure seamless travel experience from the moment you step into the terminal up until boarding.





### MULTIPLE FRONT DOOR AT KERBSIDE

There are multiple landside access points, or front doors, that serve different destination as well as different modes of ground transportation. This design is intended to prevent gridlock and to ensure smooth travel experience for passenger.





### DEPARTURE WAY-FINDING THROUGH FLOOR MARKING

Step out from your car and intuitively follow the track line to your check in island.





### COMMON CHECK IN AREA

The check in area focuses on getting the passenger through the airport as efficiently as possible. This is done integrating dedicated check in island based on destination as well as a mix of self service and conventional desk.





### SELF-SERVICE CHECK-IN AND BAGGAGE TAG

Passengers can enjoy a state-of-the-art self-service experience, designed to help to speed up the check-in process and reduce queues at every stage of your journey through the airport.





## CREATING A COMFORTABLE ATMOSPHERE

A great ambiance is about the overall experience from processors, retail, architecture, staff and wayfinding. The design of the common departure lounge integrates all of the details to make KLIA3 a great airport for users.





## FAMILY FRIENDLY FEATURES

There are several soft play areas that are great for entertaining young children while sending off your loved one. Older kids can enjoy free wifi along with places to charge up all your electrical gadgets.





## SHOPS AND RESTAURANT

The Common Departure Areas provides all the general shops and restaurant you might expect, with the addition of our delicious local flavours.





## IMMIGRATION

State-of-the-art biometric technology can immediately authenticate your identity so you can bypass immigration queues.  
This is available to all Malaysian passport holders.





## SECURITY SCREENING

The design of the security screening takes into consideration the flow of the passenger by providing a dual tray to segregate the cleared and non-cleared item. This is to avoid bottleneck at the queuing area. Preparation table and seating is also provided at the waiting zone.





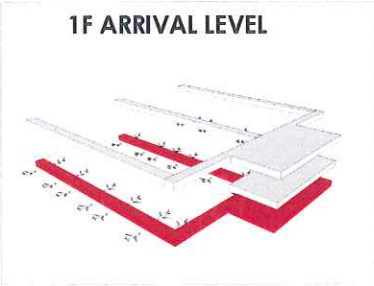
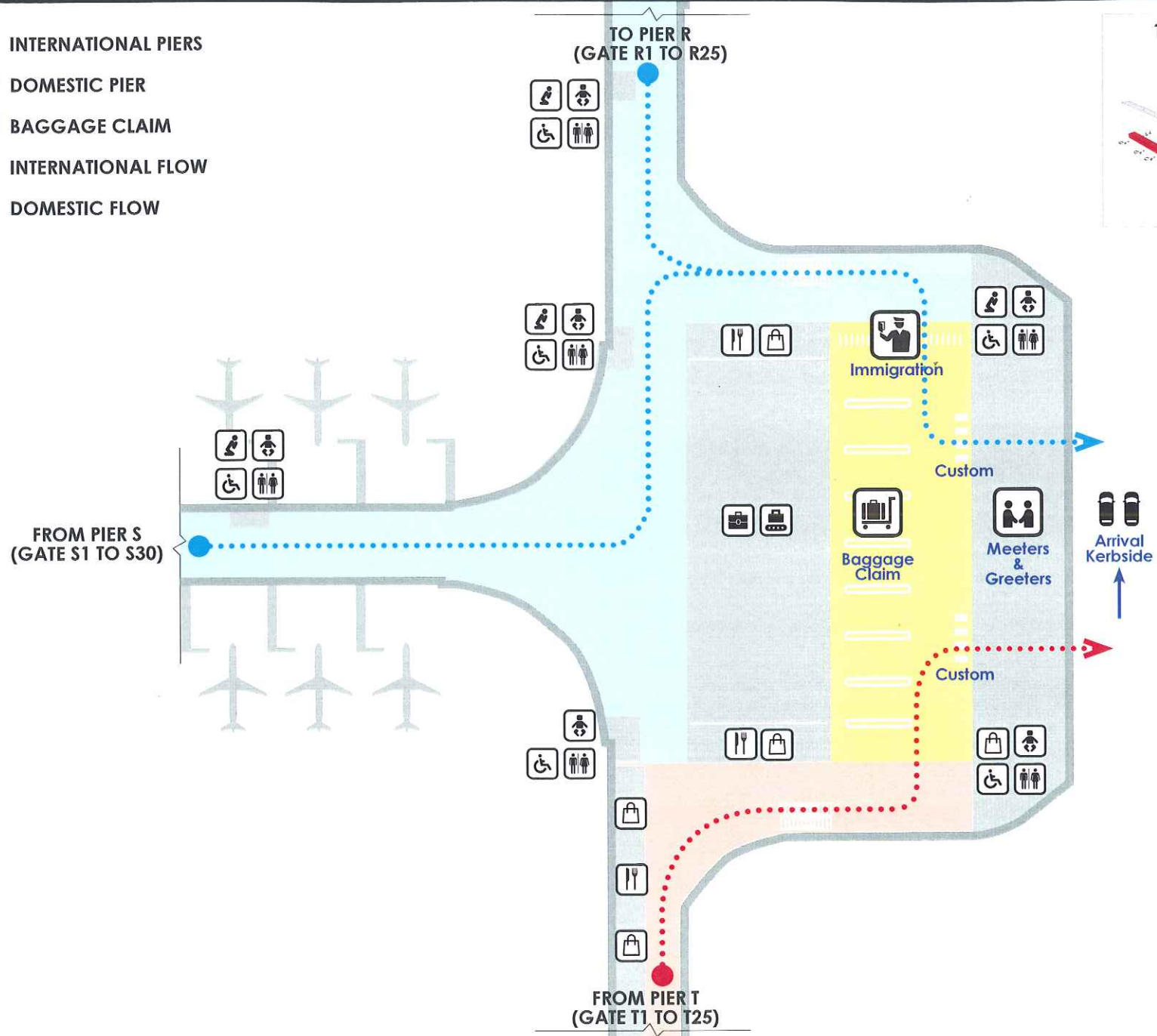
### COMMON GATE LOUNGE - FACILITIES DESIGNED FOR LEISURE AND RELAXING

The terminal is designed for passenger to experience all of KLIA3 signature comforts, facilities, and flavours in the Open Gate Lounge – including an Open cinema, Duty Free Retails, Kids Play Area and Restaurants.



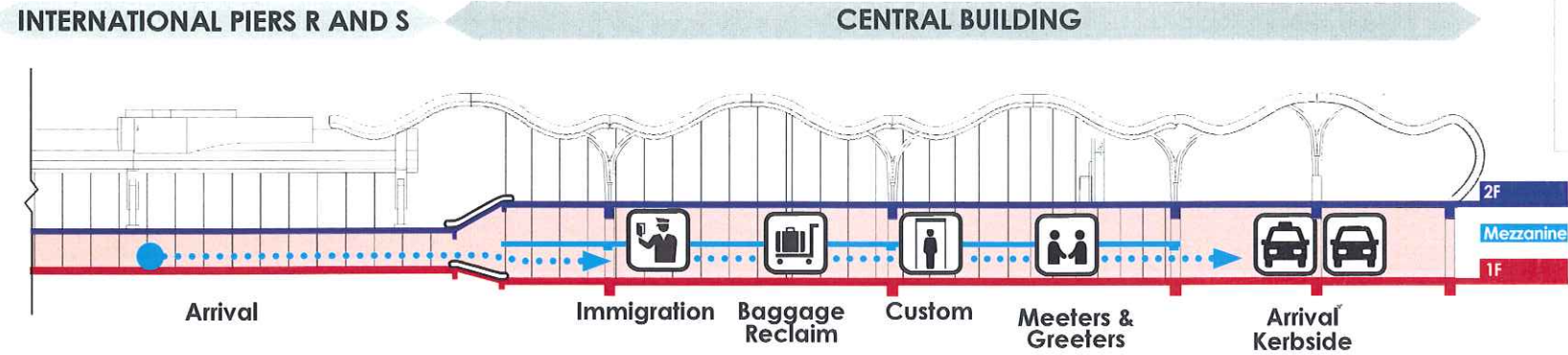
# LEVEL 1, ARRIVALS LEVEL DIAGRAM

-  INTERNATIONAL PIERS
-  DOMESTIC PIER
-  BAGGAGE CLAIM
-  INTERNATIONAL FLOW
-  DOMESTIC FLOW

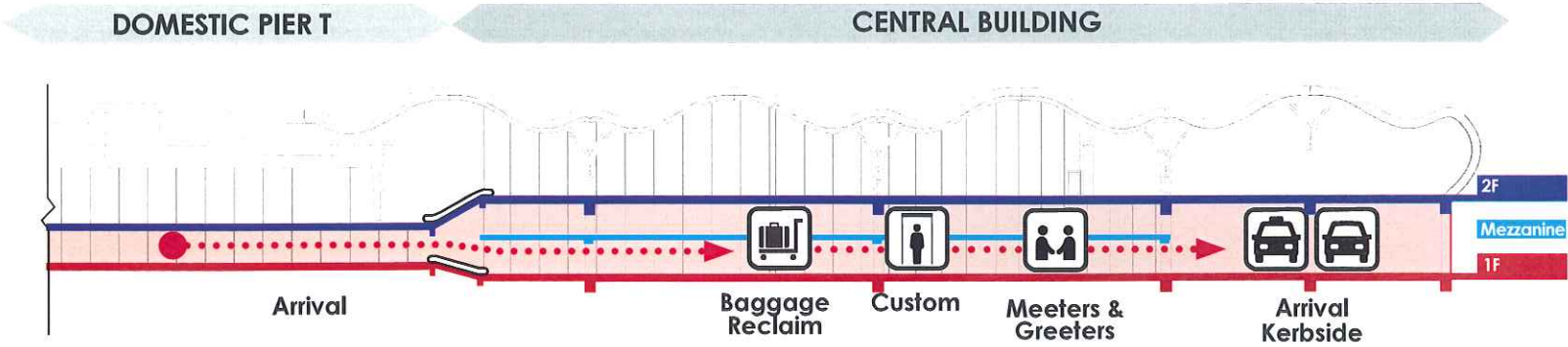




# LEVEL 1, ARRIVALS FLOW DIAGRAM

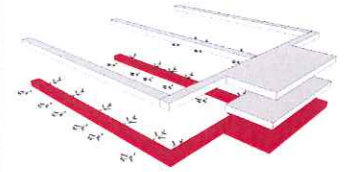


●.....➔ INTERNATIONAL ARRIVALS



●.....➔ DOMESTIC ARRIVALS

1F ARRIVAL LEVEL



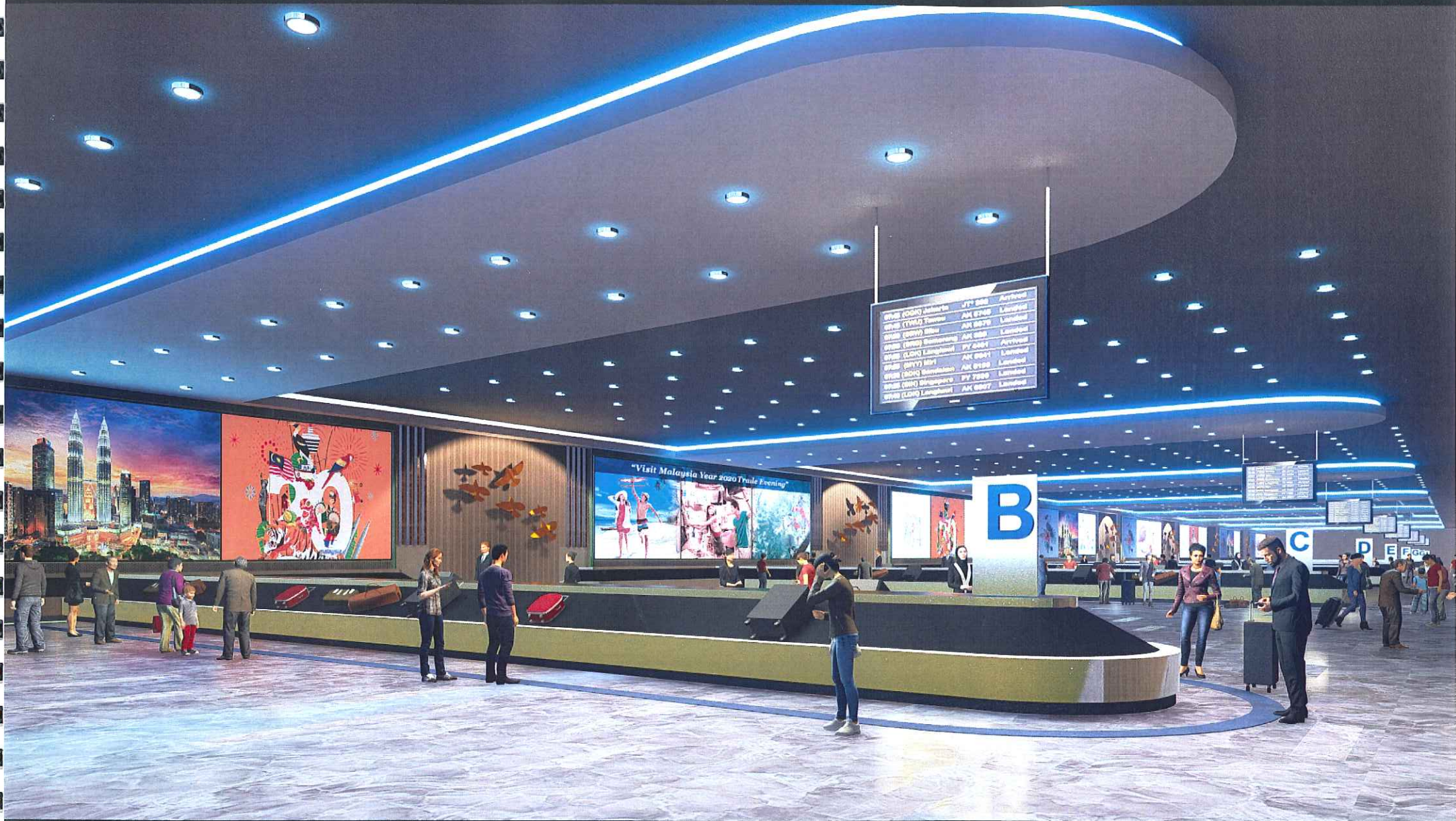
Parking



Parking







FLIGHT	AIRLINE	STATUS	DESTINATION
9808 (Q884) Jakarta	3F 888	Arrived	
9808 (Q884) Jakarta	AK 8748	Landed	
9808 (Q884) Penang	AK 8878	Landed	
9808 (Q884) BKK	AK 8878	Landed	
9808 (Q884) Bangkok	AK 888	Arrived	
9808 (Q884) Langkawi	PY 2484	Arrived	
9808 (Q884) Langkawi	AK 8881	Landed	
9808 (Q884) Miri	AK 888	Landed	
9808 (Q884) Singapore	AK 888	Landed	
9808 (Q884) Singapore	PY 2488	Landed	
9808 (Q884) Langkawi	AK 8887	Landed	

## VISIT MALAYSIA @ BAGGAGE RECLAIM AREA

For a country rich in culture and natural wonders as our beloved Malaysia, tourism can certainly be a great economic pillar. Here, Arriving Passengers get a glimpse of our country diversity while they wait for their bag to arrive.





## COMFORT FOR MEETER AND GREETER

The airports are not only designed for travelling passengers, but for people welcoming them as well. Here at the Arrival Level, meeter and greeters can enjoy the same signature comfort and facilities while waiting for your loves one to arrive.





### ARRIVALS LEVEL

The look and feel for the Arrival Levels of the terminal is intended to create a warmth experience through the usage of natural wood, stone and bamboo plant.





### BAMBOO PLANT

Bamboo absorbs carbon dioxide and releases over 30% more oxygen into the atmosphere compared to an equivalent mass of trees. Bamboo Plant are uses predominately in KLIA3 landscaping so that passengers will arrive at ease and fresh.



## CONCEPT 5 : COLORS FOR WAYFINDING

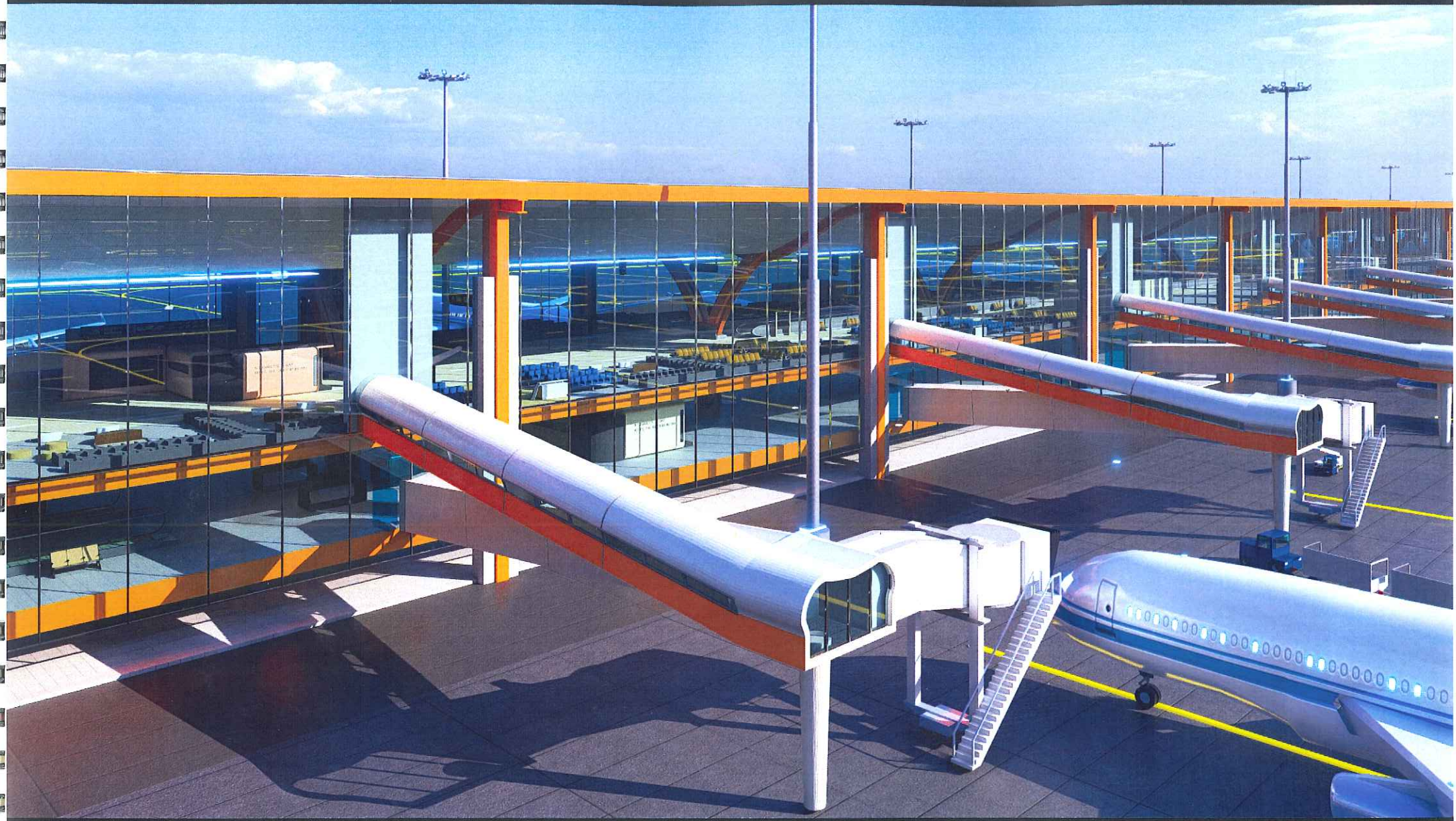


### IDENTIFYING DIFFERENT AREAS THROUGH COLOURS

There are 3 Airside Piers for the terminal and each one is designed with different colours as a means of way-finding.

Using colours in the columns supporting the harp shape roof, the different areas of the terminal are identified.





### INTERNATIONAL PIER R (ORANGE)

The International Pier R is assigned with Orange Colour. The range of Colours at each of the Pier is intended as means of way-finding. There are a total number of 25 Gates at Pier R.





### INTERNATIONAL PIER R (ORANGE)

Whilst the exterior of Pier R have a strong Orange, the interior adapted a subtle pastel orange to offers a therapeutic environment in the terminal





### INTEGRATION OF ARCHITECTURE CONCEPT WITH PASSENGER BOARDING PASS

The colour concepts will be integrated with Passenger Boarding Pass for easy direction and way finding upon boarding.





### DOMESTIC PIER T (GREEN)

The Domestic and Swing Pier T is assigned with GREEN Colour. The range of Colours at each of the Piers is intended as means of way-finding. There are a total number of 25 Gates at Pier T.

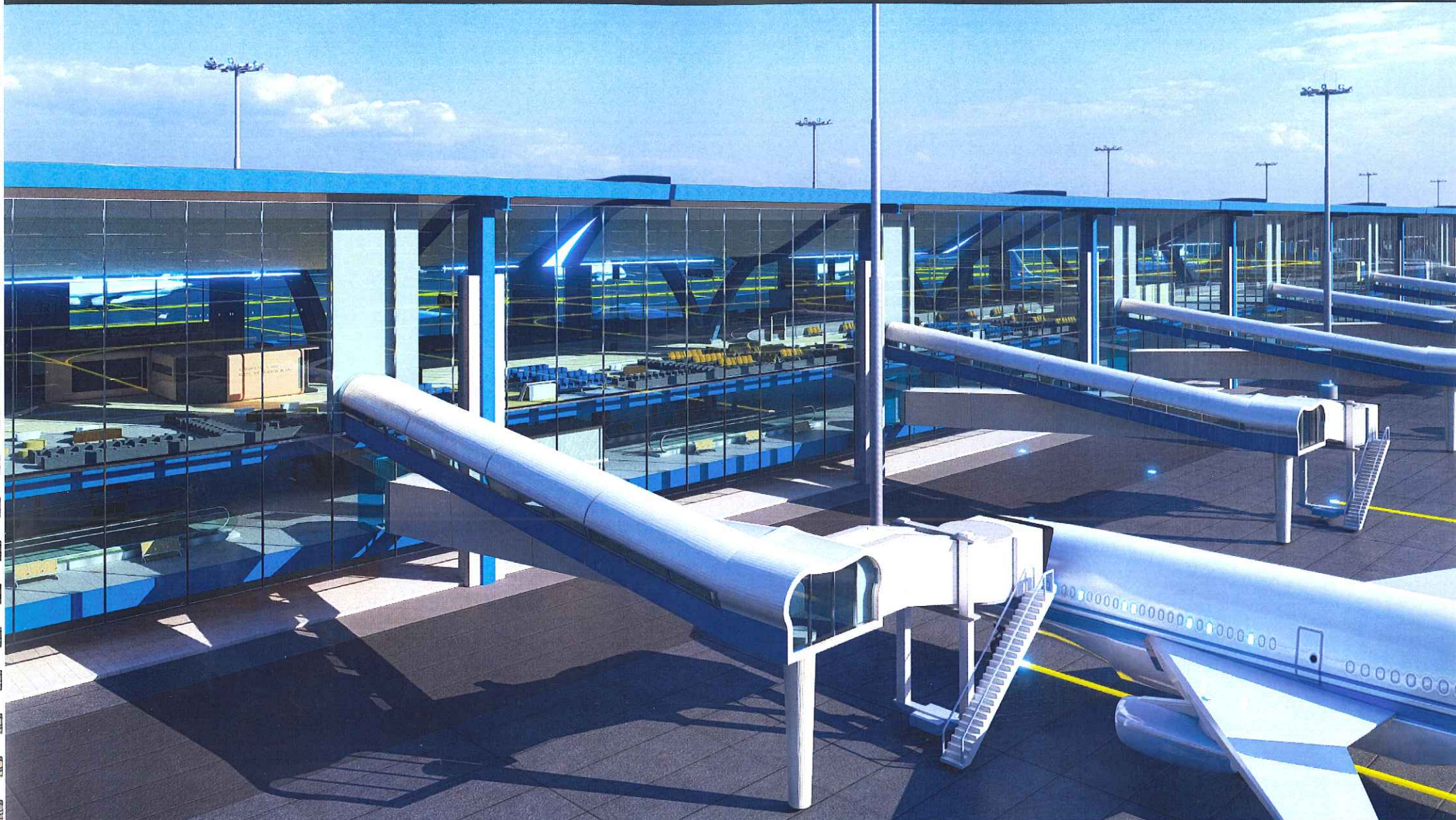




### DOMESTIC PIER T (GREEN)

Whilst the exterior of Pier T have a strong GREEN, the interior adapted a subtle pastel GREEN to offers a therapeutic environment in the terminal





### INTERNATIONAL PIER S (BLUE)

The INTERNATIONAL PIER S is assigned with Blue Colour. The range of Colours at each of the Piers is intended as means of way-finding. There are a total number of 30 Gates at Pier S.

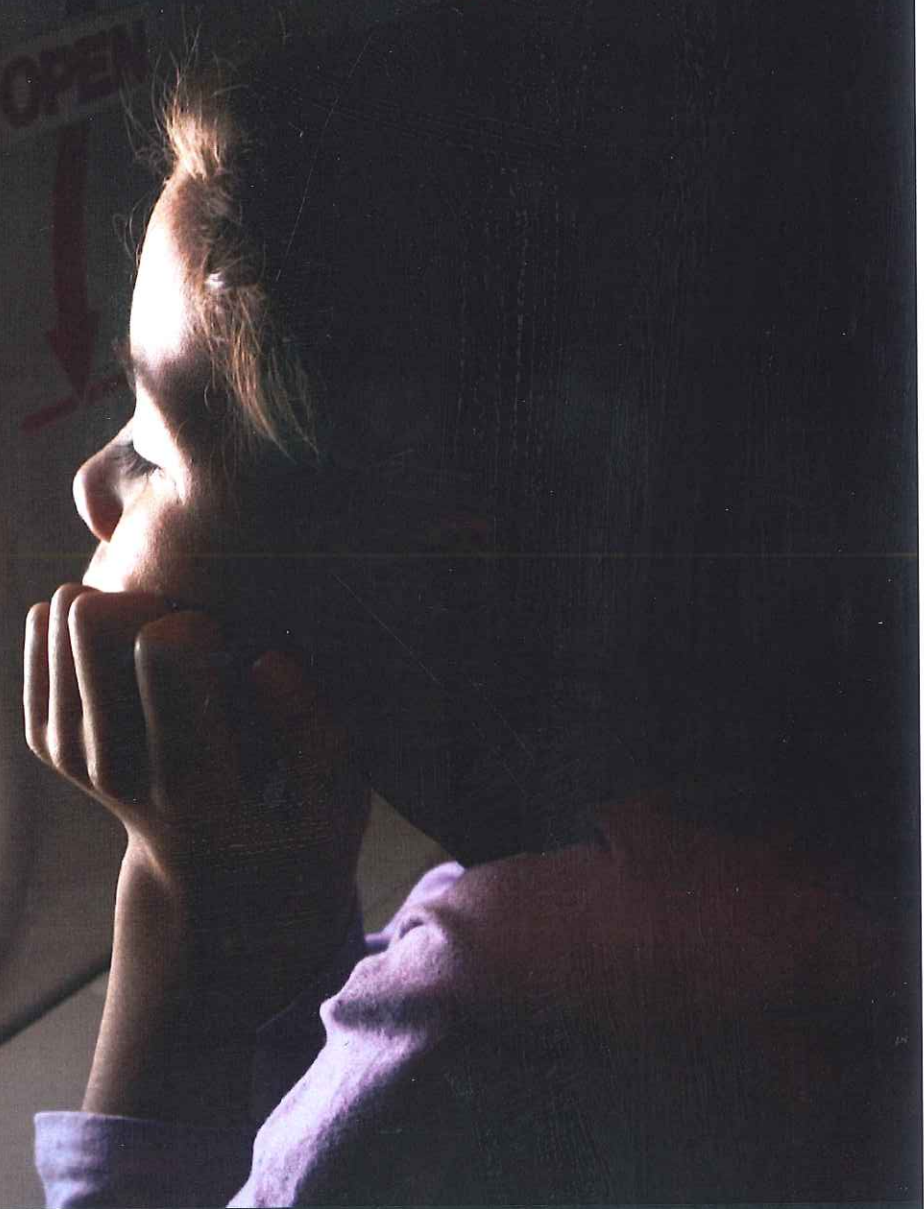




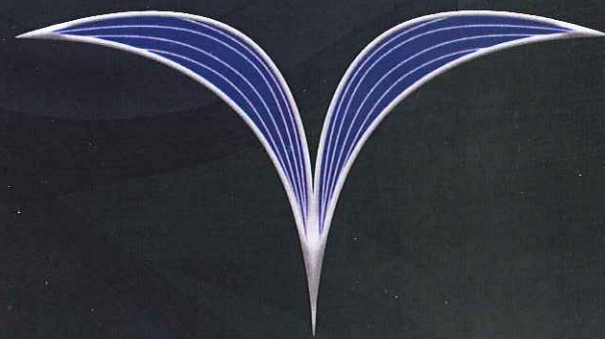
## INTERNATIONAL PIER S (BLUE)

Whilst the exterior of Pier S have a strong BLUE, the interior adapted a subtle pastel BLUE to offers a therapeutic environment in the terminal









Gerbang Prima Angkasa